

LIFE-SAVING

FOSTER CARE

GUIDE



24/7 Foster Care Support Line
(262) 993-9195

TABLE OF CONTENTS

HAWS Mission.....3

Letter to foster families.....4

Are you a foster candidate?.....5

GET READY, GET SET!

Preparing the Space.....6-7

GO!

Puppy & Kitten Development.....8

Puppy Expectations & Care by Age.....9

Kitten Weight & Feeding Chart.....10

Neonate Feeding.....11-13

Fostering Moms.....14

Small Animals & Exotics.....15

Basic Training Tips.....16-22

Maintaining Foster Health.....23-26

Veterinary Care.....27-28

THE FINISH LINE

Spay/neuter surgery.....29

Adoption.....30-31

The Humane Animal Welfare Society of Waukesha County leads the community in animal welfare and assures sanctuary for animals in need.

- HAWS Mission Statement

We envision a community where all animals are treated with compassion, dignity, and respect. We invite the public to join us in our cause to spread humane sentiments throughout our community for the betterment of animals and people alike.

To that end: The Humane Animal Welfare Society of Waukesha County operates an innovative; solution orientated animal shelter which serves as the primary pet and education resource center in Waukesha County; and the State of Wisconsin.

- We embrace the community's pet owners and actively include the public in our mission.
- We treat the public as associates with a shared dedication to improving animal welfare and spreading humane sentiments and values.
- We are dedicated to education, offering exemplary youth and public education programs which will improve the lives of all beings in our community through shared kindness and compassion.
- We encourage responsibility and train youth to nurture those that depend on us for care.
- We operate a model adoption center where one can find the best possible companion, optimizing the animal's potential both in health and temperament.
- We have the public's confidence when they need to rehome their pet.
- We are dedicated to ending needless suffering caused by the overpopulation of domestic species.
- We work hand in hand with other organizations sharing humane values throughout our community.
- We are the lead Emergency Management service provider working in conjunction with the state associations and operate an Animal Rescue Service to reunite strays with their owners and prevent needless suffering of abandoned pets.

We believe that the care of the community's animals is not limited to only those animals that reside within our walls but also to all animals in our community. For that reason we actively seek out and embrace the people of our community, being ever diligent in inviting them to join our cause. We will help more animals by helping people help animals.

DEAR FOSTER VOLUNTEER,

First and foremost, THANK YOU! You are about to embark on a life-saving adventure that you'll never forget and you'll become a hero to your foster animal! Our foster program exists to give young animals a chance to grow and to give injured, sick, or under-socialized animals an opportunity to heal. Since the program's inception, our foster families have saved thousands of dogs and cats that would otherwise have been euthanized without this amazing resource.

In this manual, you will find guidance and helpful tips to ensure success for the duration of your foster animal's stay.

Types of Animals That Need Foster Homes

- Orphaned animals that are too young for adoption
- Injured, sick, or post-surgical animals that need time and TLC to recover
- Under-socialized animals that require socialization and training
- Pregnant mothers or mothers with their newborn litters

If the requirements included in the following section do not work well with your current schedule, please let us know. We can help you find a foster situation that will work best for you!

Sincerely,

The HAWS Foster Team!

ARE YOU A FOSTER CANDIDATE?

TIME

Are you able to devote the required time daily and weekly to your foster animal (see chart below)? YES NO

Are you able to bring foster animals to the shelter for vaccinations and wellness exams every 1-2 weeks? YES NO

Are you able to contact HAWS or take foster animals to an emergency care facility quickly in an emergency? YES NO

SPACE

Are you able to separate your foster animals from your household pets for at least two weeks to protect them from illnesses and allow for proper adjustment period? YES NO

Are you able to handle cleaning procedures such as washing hands after every encounter and cleaning/disinfecting the kittens' quarters routinely? YES NO

Are you able to handle any potential home damage (carpet, clothing, and/or furniture) associated with animals? YES NO

CARE

Are you prepared to handle sickness or possible death of your foster animal? YES NO

Are you able to emotionally handle letting go of the foster animal after becoming attached once their foster period is over? YES NO

Are you able to handle the potential of foster animals carrying illness that could affect your household animals/family? YES NO

Time Commitments & Responsibilities

Type of Foster	Duration of Foster	Daily Commitment
Sick/Injured Cats	1 week-2 months	2-3 hours
Weaned Puppies	1-3 weeks	3-6 hours
Sick Injured Dogs	1 week-2 months	2-3 hours
Neonate Puppies	6-8 weeks	8 hours
Mom w/ Puppies	2-8 weeks	3 hours

GET READY!

Preparing the Room

Before you bring home your foster(s), make sure that you have a suitable place for them to stay. A bathroom often works well. The room should adhere to the following guidelines:

- A space where temperature can be controlled.
- The space has been disinfected by using a mild bleach solution (1-part bleach to 32 parts water).
- Separate from other household pets.
- Can withstand messes: spilt water or food, vomit, urine, feces, etc.
- No breakable items.
- Electrical outlets and wires are blocked.
- No small items.
- Secured windows (closed or with a secured screen).
- Secured appliances (toilet lids closed).

TIPS & TAILS

Use glass or metal bowls as plastic bowls are porous and not as easy to clean.	Clean linens and toys daily.	Supervise play time.
--	------------------------------	----------------------

GET SET!

Check below for further tips on how to properly set up your new fosters environment.

Cats

- Indoors only (do not let your foster cat/kitten outdoors).
- A separate room (bathroom or large closet) is best.
- Isolation from other cats in the home is necessary for safety and comfort and to prevent the spread of potential diseases.

Dogs

- Dogs should be kept indoors in a crate when unattended or a separate room/office.
- Dogs should be on a leash at all times when outdoors unless in a private secure fenced-in area.
- **Foster dogs/puppies are not permitted to go to dog parks or Doggy Daycare facilities.**
 - Dog parks can be extremely dangerous environments; there are no lifeguards or professionals at a dog park when conflicts arise
 - Not every dog is safe
 - While dogs are social animals, they are individuals and do not like every dog they meet
 - Dogs have a variety of play styles and these play styles can be conflicting and instigate fights
- Dog intros will be performed at HAWS if there are resident dogs in the foster home

Puppies

- Indoors - kitchen or bathroom. Baby gate or exercise pen provided upon request.
- Puppies should be around humans for socialization purposes and should not be isolated.
- Puppies should be kept in a crate at all times when not under supervision. Crates are provided.
- Outdoors - only if supervised by an adult. Puppies younger than 5 months should NEVER go to dog parks or similar settings because they are not fully vaccinated.
- Puppies should not be exposed to other dogs due to the risk of diseases such as parvovirus.

TIPS & TAILS

Runaway Foster
If your foster escapes or runs away, contact the Foster Coordinators immediately. You may also contact animal control for your area.

If your foster dog gets loose while on a walk, do not chase, simply lay on the ground and calmly call their name.

If your foster cat escapes the home, place a blanket that smells like the cat/home and litter box outside of the home.

Be sure to have your foster's collar and tags on at all times. If you did not receive your fosters tags at the pickup, call the Foster Coordinator.

GO! ANIMAL CARE GUIDE

Puppy & Kitten Development

In the first two weeks of life, puppies and kittens are helpless and vulnerable. They are still developing basic reflexes, their hearing and vision is still not fully developed, and they are unable to properly control their body temperatures. They should therefore be confined to a nurse area. Puppies and kittens should not be allowed to mingle with your own pets.

During the first 1-3 weeks of life, puppies and kittens do not urinate or defecate on their own. They require stimulation for elimination. Gently rub a warm cloth or cotton pad on the genital area and anus. This should be done before or after feeding.

Keeping puppies and kittens clean from food and feces is vital for his or her health. If you notice your foster animal has food, urine, or feces on him or her, gently wipe them clean with a warm damp cloth or baby wipe. Be sure to dry them afterwards so they do not become chilled.

HAWS will ask that you weigh the kittens or puppies daily. They will send you a link to a One Drive document where you will enter these weights in grams each day. This way if there is any issue that arises that staff can look at the weight history for any clues.

TIPS & TAILS

Bathe your foster with a tear-free puppy or kitten shampoo. Be sure to dry afterwards using a towel or blow dryer.	Puppies are chewers! Be sure to remove all electrical cords and small objects they could ingest.
--	--

GO! ANIMAL CARE GUIDE

Puppy Expectations & Care by Age

WEEKS	FEEDING	DEVELOPMENT
0-1	Bottle feed ½ tablespoon formula every 2-3 hours, overnight feeding can be every 3-4 hours. If there is a Mom dog, make sure that all puppies are nursing. Puppies can nurse from Mom for up to 45 minutes at a time. A lot of crying or activity could indicate a problem with Mom's milk supply	At one week of age, the puppies should be handled minimally. Puppies will sleep about 90% of the time and eat about the other 10%. Puppies should be kept in a warm environment as chilling is the number one danger to newborn puppies.
1-2	Bottle feed every 2-3 hours until puppies' bellies are full, but not bloated. Overnight feeding can be every 3-4 hours.	Healthy puppies should be round and warm. When you pick up a puppy, they should wiggle energetically and healthy puppies seldom cry. The puppy's ear canal should be open between 5 and 8 days. Eyes will open between 5 and 14 days.
2-3	Bottle feed formula every 3-4 hours, until their bellies are full not bloated.	Puppies begin to crawl around and should be almost standing. They will begin to play with each other, biting ears, tails, and paws before their teeth come in. They should be teething at this period.
3-4	Bottle feed formula every 4 hours until the puppies are full but not bloated. Puppies may start to lap from a bowl.	Puppies begin to see well and their eyes begin to look and function like adult dog eyes. Puppies will start cleaning themselves. If they have a mother, she will continue to do most of the serious cleaning. At three weeks, puppies are in their canine socialization period. If they have siblings, allow them to play at will.
4-5	Bottle feed as needed to keep puppies from crying with hunger. Puppies usually can drink and eat from a saucer by 4 weeks. Weaning should be done gradually. (See Weaning description in Puppy Care section.)	Begin housebreaking at four weeks of age. This can be done by using training pad or taking the puppy to an outside secure fenced in area of your home. After each feeding, place the puppy on the pad/outside for him/her to go to the bathroom. Be patient! He/she may not remember to do this every time.
5-6	Feed gruel 4 times a day. Thicken the gruel gradually by reducing the amount of water mixed with it. Introduce dry food and water. If you are fostering a litter with their mother, continue weaning. For reluctant eaters, try mixing puppy food into the gruel.	At about 5 weeks, puppies can start to roam around the room, under supervision. The strongest, most curious puppy will figure out how to get out of the nest and the others will quickly follow. Be sure to allow the puppies to have different types of toys around so they may explore and become familiar with a variety of surfaces and textures.
6-7	By this age, puppies should be eating dry food well. Feed the puppies at least three meals a day. Puppies may not eat much at a single sitting, they usually like to eat a frequent intervals throughout the day	By this time, you will have "mini-dogs". They are able to wash themselves and play games with each other and you. Some puppies may be food possessive, you may need to use a second dish and leave plenty of food out. Do not use adverse or punishing correction techniques. Be sure to take the puppies to their pads or outside after feeding, during play sessions, and after naps. These are the usual time that puppies need to eliminate.
7-8	Offer dry food 3-4 times a day. Leave a bowl of water down for them to drink at will. Do not feed the puppies table scraps.	Continue playing and socializing with the puppies. You can even begin training such as sit, down, roll over and come when called
8+	Offer dry food 3 times a day. Leave down a bowl of water for them to drink at will.	By this time, the puppies should be ready for spay/neuter surgery and adoption.

GO! ANIMAL CARE GUIDE

HAWS Kitten Weight and Feeding Chart

Age	Weight in Grams / Ounces / LB	Amount to Feed	Frequency/24 hours
0-1 week	50-150 grams / 2-5 ounces approx.	2-6 ml/cc	Every 2 hours or at least 7-8 feedings
1-2 weeks	150-250 grams / 5-9 ounces approx.	6-10 ml/cc	Every 2-3 hours or at least 6-8 feedings
2-3 weeks	250-350 grams / 9-12 ounces approx.	10-14 ml/cc	Every 3-4 hours or at least 6-8 feedings
3-4 weeks	350-450 grams / 12 ounces - 1.0 lb	14-18 ml/cc	Every 3-4 hours or at least 5-7 feedings
4-5 weeks	450-550 grams / 1.0 lb - 1.4 lb	18-22 ml/cc Begin weaning	Every 5-6 hours or at least 4-6 feedings
5-8 weeks	550-850 grams / 1.4 lb - 2 lb	Weaning, always provide wet food, KMR slurry	

This chart is a guide to monitoring approximate weight and feeding amounts but please remember that all kittens are individuals and their needs may vary. In addition to feeding quantity and frequency, appearance and activity level should be monitored.

If a kitten misses 2 or more meals, shows signs of distress or fatigue, please contact the **HAWS Foster Care Line for assistance at 262-993-9195.**

NEONATE FEEDING

Type of Food

Never give a neonate puppy or kitten anything other than their specified formula! (No cow's milk!)

Puppies and kittens that are less than three to four weeks' old are fed a combination of liquid or powder formula. After a feeding, unused liquid formula can be stored for up to three days in the refrigerator or frozen for future feedings. Frozen formula will last for 6 months.

The powder formula must be mixed for feedings. It is important to closely follow mixing directions on the container, as it can cause diarrhea or constipation if not done correctly. When mixing, do not use a blender as this will cause too many bubbles to form. Any reconstituted powder formula can be refrigerated for up to 24 hours. After that point, it must be discarded.

Feeding Etiquette

- **Only use clean nipples and bottles!**
- Feed puppies & kittens one at a time. Place them on a countertop or other horizontal surface and allow them to feed with four paws on the counter and with a level head. This simulates how they would nurse from a mom.
- Do not feed a puppy or kitten while she is on her back. This can cause formula to go down the wrong way and end up in the lungs.
- Gently open the puppy's or kitten's mouth with your finger and place the nipple on the tongue.
- Stroking puppy or kitty can help them to eat.
- Pull lightly on the bottle. This promotes strong sucking.
- Tilt the bottle up slightly. This prevents the puppy or kitty from inhaling too much air.
- Do not squeeze the bottle to force formula into the puppy's or kitty's mouth. This can cause formula to move into the lungs.
- After feeding, burp your puppy or kitty by gently massaging her back.
- Be sure to stimulate the puppy or kitty after or before feeding to encourage elimination. Stimulate them with a warm cloth if necessary.
- Fill out the Daily Weight and Feeding Record.

TIPS & TAILS

To warm nursing bottles, fill a coffee mug halfway with hot water and place the bottle of formula into the mug. After a minute or two, test the formula by sprinkling a few drops on the back of your hand. Formula should be warm to the touch, but not hot.

NEONATE FEEDING

Weaning

Weaning can occur at 3 to 4 weeks and should be conducted gradually. Create a gruel by mixing moistened dry food with water or canned food. Introduce them to solid food by offering warmed can food, mixed with a small amount of water into gruel, in a shallow dish. Begin by placing puppy or kitty to the side of the plate, he or she should start to eat, it may take a few tries for puppy or kitty to understand. If they are not interested, wait a few hours and then try again. After they have accepted the gruel, gradually thicken it by adding less water. Begin to also offer dry food on a free feeding basis.

If the mother is present she will usually begin weaning the puppies or kittens by discouraging them from nursing; however, some dogs or cats will allow the nursing until the puppies or kittens are old enough for spay/neuter surgery. Some nursing activity is the canine and feline equivalent of thumb sucking, that is, for comfort only. Even if the puppies or kittens appear to be nursing, they may not be getting all of the nutrition they need from mom. Make sure the puppies and kittens are eating food and gaining weight.

Amount of Food

Overfeeding is as dangerous as underfeeding. Feed until full but not bloated.

Cleaning Equipment

Keeping the nursing bottles and supplies clean is vital as this will prevent diarrhea, vomiting, or infection. Cleaning the bottles and nursing nipples is quite easy. Using hot, soapy water clean the bottle with a bottle brush. If you do not have a bottle brush you may wash the bottle and nursing nipple in the dishwasher. You may place them in the silverware rack or in a dishwasher basket.

Additional Feeding Considerations

The digestive systems of puppies and kittens are fragile. Do not offer treats. Only feed the the food provided by HAWS. If puppies and kittens are fighting over food, start to feed them separately. Contact the Foster Care Support Line for help as needed. Never take food away from a puppy that is growling. Simply remove the other puppies and wait for the food bowl to be unattended.

NEONATE FEEDING

Sample Neonate Puppy & Kitten Daily Weight and Feeding Record

NAME/ID	PUPPY 1	PUPPY 2	PUPPY 3	PUPPY 4	PUPPY 5	PUPPY 6
Date						
Weight						
Attitude						
			Feeding 1			
Milk volume						
Stool/urine						
			Feeding 2			
Milk volume						
Stool/urine						
			Feeding 3			
Milk volume						
Stool/urine						
			Feeding 4			
Milk volume						
Stool/urine						
			Feeding 5			
Milk volume						
Stool/urine						
			Feeding 6			
Milk volume						
Stool/urine						

Notes:

FOSTERING MOMS

In some cases, moms and litters are fostered together. There are a few things to keep in mind for this type of foster situation. Moms require a calm setting that has privacy and minimal activity. Stress can cause moms to stop taking care of their puppies.

Bringing Mom Home

You will need a separate space for a mom with her litter. When you first bring them home, leave them alone in their new space. The separate area may be referred to as a whelping box or nesting area. Mom will need some time, up to a few days, to adjust to her new space. Be sure to offer mom fresh food, water and a clean nesting area.

Socialization

Even adult animals need socialization; however, proceed slowly with any adult animal that you do not know. Create situations for socialization but let mom come to you. Stop the session if you notice any negative signs, such as swishing tail, ears laid back, head jerk towards you, tensing up, moving away, or growling. It is always best to move slowly and use caution when reaching into the nesting area.

Mom and Her Young

For the first few weeks, mom will do everything necessary to take care of her puppies or kittens. Puppies and kittens start nursing very soon after birth. Mom will also groom her puppies or kittens. It's best to leave the mom alone for the first two weeks except to feed and, and in the case of dogs, to take mom outside for bathroom breaks.

Possible Issues with Moms

Maternal Neglect- In some cases, about 8% of the time, puppies or kittens die from poor maternal care. There are a few causes of this. Some moms lack maternal instincts and, in other cases, it is nature's way of handling sick or weak animals. Environmental stress is an important factor, which is why it is important to create a calm environment for mom and the litter. Foster parents should watch for signs of maternal neglect. Call the Foster Care Support Line if you notice the mom avoids feeding and grooming her young and ignores their cries.

Maternal Aggression- As mom protects her young, it is common for her to be aggressive towards humans or other animals. Do not try to introduce your household pets to your foster mom as this adds too much stress to the environment. If aggression becomes severe, call the Foster Care Support Line.

A WORD ABOUT SMALL ANIMALS & EXOTICS

Are there opportunities to foster animals besides cat and dogs?

You bet! HAWS places small mammals, birds, and exotics in foster care for the same reasons dogs and cats are placed in foster care. Because of the wide variety of species we receive at HAWS and the unique care needs for each species, care info is not provided in this guide. Care info is provided to foster volunteers at the time they take their foster pet/s home.

Helpful Small Animal Care Links:

Rabbit Links

- House Rabbit Society: www.rabbit.org
- Wisconsin House Rabbit Society: <https://wisconsinhrs.org/>

Guinea Pig Links

- cavyMadness: <http://www.cavymadness.com/>
- Guinea Lynx: <http://www.guinealynx.info/>

Rat Links

- The Rat Fan Club: <http://www.ratfanclub.org/>
- Rat Assistance & Teaching Society: <http://www.petrats.org>

Bird Links

Brook Falls Veterinary Hospital & Exotic Care :
<https://brookfallsveterinary.com/pet-library/bird-articles/>

Miscellaneous Small Animals & Exotics Care Link

- Brook Falls Veterinary Hospital & Exotic Care: <https://brookfallsveterinary.com/pet-library/>

BASIC TRAINING TIPS

Mouthing

- Puppies and kittens are born with instincts to bite. One of the most important things they learn as a puppy or kitten is how to control the strength of their bite, also known as bite inhibition.
- Puppies and kittens naturally train each other how to bite. When one bites another too hard, the other yelps loudly and stops playing.
- As a foster parent, you can play this role. Any time a puppy or kitten mouths with too much force, yelp loudly. If the puppy or kitten stops biting, then praise him/her lavishly. If they continue biting, turn your back on them and walk away. After ten seconds or so, resume play happily. A tether may be needed to keep the puppy in one place so that he/she cannot follow you!
- Remember: Mouthing is important! A puppy or kitten who is never allowed to mouth will grow up to have a hard bite.
- Never scold, tap on the nose, or yell no at an animal that is biting. Bite inhibition is a crucial development for young animals. A young animal that is punished for biting can turn into an adult with unsafe jaws (because they do not know their jaw strength). Simply yell “ouch” when a puppy or kitten bites too hard.
- Later in this guide we cover how to limit *kitten* play biting, specifically.

BASIC TRAINING TIPS

Housetraining

We always want to set our puppies up for success, and doing so in the house training process is essential! Puppies should have frequent breaks and be taken outside to the same spot to relieve themselves every 30 - 60 minutes when active (when waking up from a nap, after drinking or eating, and after a play session). A puppy can hold his/her bladder one hour for each month of age (i.e.: 2 months = 2 hours, 3 months = 3 hours).

Remember these five steps to successful house training:

1. Anticipate bathroom needs to prevent accidents
2. Reward going to the bathroom successfully outside, every time!
3. Supervise puppy! Prevent him/her from sneaking off to a different room, and crate the puppy when you cannot be paying attention.
4. Avoid punishing accidents. They will happen, and you can do better next time! Rushing the puppy outside also doesn't serve any purpose, as the deed is already done!
5. Clean up accidents with enzymatic cleaner.

Pee Pads: For puppies five weeks and under: place puppies on pee pads immediately after waking up, after eating, and about once an hour. Praise the puppy enthusiastically every time he/she urinates or defecates on the pad. Change the pads frequently, as puppies tend to chew on pee pads.

Crate Training

House training and crate training go hand in hand. A crate can be a great tool to use for your puppy, but it can also be misused. The crate should be big enough for your puppy to stand up, turn around, and stretch out; we will make sure you go home with the correct size, but your puppy may grow. Please let us know if you need a larger crate.

Your foster puppy/dog should have a short term confinement area, such as the crate, and a long term confinement area, such as an x-pen or baby gated section of the house or room.

If you are beginning to crate train, feed your puppy in the crate, provide stuffed chew toys only in the crate, and/or play crate games to build a positive association with the crate. Keep sessions short and fun, and have your puppy in the crate for short periods of time when you are home too. The HAWS behavior department team can provide assistance with any of the crate games/tips when needed!

Never use a crate as a form of punishment for your foster puppy or dog, nor push, shove, or pull your foster into the crate.

BASIC TRAINING TIPS

TIPS & TAILS

After your dog eliminates, plan an extra few minutes to play with your puppy. Dogs quickly learn to hold their bladder if they immediately go inside after they relieve themselves.

Creating Faithful Litterbox Habits

For foster cats and kittens, the following details should be regarded as crucial components to develop healthy litterbox habits:

- Food and water should not be placed near the litterbox(es). Nobody enjoys eating in the bathroom...
- Litterboxes should be large enough to accommodate the cat's size. Length of the box should be 1.5x the length of the cat, and width of the box should be at least as long as the cat, too!
 - Under the bed storage containers make cheap, convenient litterboxes without being too expensive!
- Cats prefer sandy, silty substrates. Clumping/scoopable litter is preferred by most cats, and keeps your litterbox as tidy as possible.
- AVOID SCENTED LITTER! If we have accidentally provided you with scented litter, feel free to request a different type. The strong perfumes can be exceptionally aversive to cats.
- Scoop at least once per day. Think of this action as you would "flush a toilet." Your foster cat or kittens will appreciate your attention to cleanliness.
 - If fostering a litter of kittens, you may need to expect that multiple litterboxes might be necessary. If room does not allow for this, then expect to scoop more often than once a day without a doubt!
- Avoid covered/hooded litterboxes. They trap odors, hide messes, and contribute to cats feeling a bit more vulnerable since they cannot see their entire surroundings. This makes "escape" difficult.
- Try to avoid filling the box with too much litter. Most cats will happily tolerate ~2 inches of litter!
- Pay attention to your foster's ease/comfort in getting into the box. Shallow boxes are easiest, but higher-sided boxes (such as tote bins) can work for kitties who like to elevate their bottoms as they urinate!

BASIC TRAINING TIPS

With kittens - the same rules apply as above - but make sure that you are setting your kitten(s) up for success:

- Ensure that your kitten(s) know where the boxes are at all times. If/when you are gradually allowing your fosters to explore more of your home, we suggest:
 - Take them periodically back to their “room” to use their litterbox. Maybe every 20-30 minutes, depending on age!
 - Bring a litterbox directly into the area/room the kittens are playing in. Make it very easy for them to find.
 - You can even place the kitten in the box periodically, to see if they need to eliminate!

Never punish a foster cat or kitten for eliminating outside of his/her litterbox. Instead, please call or email the behavior department team to address other possible causes for the lapse in usage.

BASIC TRAINING TIPS

TIPS & TAILS

Runaway Foster

If your foster escapes or runs away, contact the Foster Coordinators immediately. You may also contact animal control for your area.

If your foster dog gets loose while on a walk, do not chase, simply lay on the ground and calmly call their name.

If your foster cat escapes the home, place a blanket that smells like the cat/home and litter box outside of the home.

Be sure to have your foster's collar and tags on at all times. If you did not receive your foster's tags at the pickup, call the Foster Coordinator.

Toys

Having toys available for your puppy is vital for their mental health and development. A selection of toys is best such as plush squeak toys, rope toys, stuffed Kong's, and teething toys.

Socialization

From 3 weeks to 3 months, puppies are biologically primed to learn that new sights, sounds, smells, objects, environments, and people are fun and safe. This is the most crucial and sensitive period in a puppy's life.

Socialization is not simply exposing a puppy to a variety of people, places, and things, but using positive proactive socialization training. Each new person the puppy meets should be a wonderful experience with treats and toys. Take things slow if your puppy seems fearful of the new person, place, or thing. Allowing the puppy to make observations of his/her environment is critical in helping the puppy gain confidence.

Training: Positive Reinforcement

As a foster parent, there will be many situations for you to train your animal. HAWS only promotes training using positive reinforcement. Decades of research and scientific study concludes that Positive Reinforcement training is the most humane and effective method of training.

Do not scold or punish bad behavior.

When an unwanted behavior is offered/performed, re-direct the puppy with a kissy noise or toy. Praise and reward the puppy for stopping the undesired behavior and giving you attention. Punishment can instill fear, which can lead to aggressive behavior. Praise and reward good behavior. When a behavior is immediately followed by a positive out-come, that behavior is strengthened.

Additional Reference Books:

Perfect Puppy in 7 Days: How to Start Your Puppy Off Right by Dr. Sophia Yin

Puppy Start Right: Foundation Training for the Companion Dog by Dr. Kenneth Martin and Debbie Martin

Fenzi Dog Sports - a collection of "must-have" articles:
<https://www.fenzidogsportsacademy.com/images/fdsa/Growing-Up-FDSA-eBook.pdf>

BASIC TRAINING TIPS

Socialization Checklist

Socializing your puppy to these items/actions is as easy as touching your puppy's paw and giving a treat, having a man with a hat give a treat as he walks by or saying hello and giving affection.

PEOPLE	
MEN- tall, bearded, variety of ethnicities, younger, older, men with canes/walker, men with hats, etc.	
WOMEN- tall, younger, variety of ethnicities, older, with purses, with walker/canes/crutches, etc.	
CHILDREN- behaviorally appropriate- keep puppies on the ground	
BEHAVIORS	
Laughing, talking loudly, walking, jogging, running, etc.	
ITEMS	
Vacuums (turned off), mops, brooms, bicycles, skate boards, tricycles, lawnmowers (turned off), etc.	
SURFACES	
Grass, concrete, stairs, carpet, tile, hardwood, etc.	
HEALTH & GROOMING	
Nail clippers (not used, just introduced), feet being touched, ears being touched, tail being touched	

BASIC TRAINING TIPS

Fearful Cats and Dogs

When fostering fearful animals, it is very important to move at the animal's pace. Flooding an animal can occur anytime you attempt to expose them to something they are not prepared to handle, which can overwhelm the animal, and cause them to regress further. Try not to focus on length of time that it will take to progress, but rather on the quality of the animal's progress (no matter how slow that may be)! And remember, the behavior department team is ready and willing to assist with more challenging cases!

- Provide a safe, calm space. A private room, crate, or x-pen may help the animal feel a bit more secure in a brand new home. Decompression could take days or weeks after the animal leaves the shelter, so it will be important for them to have this space to retreat to and hang out in.
- Let the animal come to you, completely on their own. Do not force any interactions that the animal is not comfortable with. A dragline or leash can be worn by fearful/shy foster dogs, in order to take them outside. But otherwise, let the dog or cat move freely into, or out of, your space as they wish.
- With an under-confident or fearful foster animal, almost any offered behavior should be appreciated and reinforced. Eye contact, movement out of their safe space, playing with a toy, jumping off the couch, soliciting attention, walking across the room - reinforce this behavior with praise and treats (or food). Do not take these little moments for granted!
- Play calming music in your home. Through A Dog's Ear or Through A Cat's Ear CD's can be rather beneficial - or you can search calming music channels on youtube.com as well!
- Thundershirts can be provided by HAWS for fearful foster pets. These jackets can provide feelings of comfort as the material tightly swaddles and places pressure on the body.
- Keep a consistent routine, if and wherever possible! Consistency can help a fearful animal find predictability in their environment, which can lead to increased feelings of safety.
- Take note of what the animal enjoys and will offer! Does he/she love to curl up on a particular blanket? Chew on a particular toy or bone? Look out a specific window from a perch where they feel safe? Has he/she been more outgoing or trusting of any specific family member in the home? These pieces of information can really help out HAWS' staff, as well as any future adopters.
- Contact the behavior department team for help with behavior modification strategies for your particular foster!

HAWS Behavior Department Staff (262) 542-8851, Ext 204

MAINTAINING FOSTER HEALTH

Diarrhea

There are three types of stool: normal, soft and diarrhea. Normal stool is firm and has a definite shape. Soft stool is not firm but still has some shape. Diarrhea is liquid, with or without color to it. Diarrhea is common and can be caused by parasites, viruses, bacteria, food changes, stress, overfeeding and other issues.

Diarrhea must be monitored as it can lead to dehydration. If the foster is active, mild diarrhea that occurs for 24 hours is not a concern. Feed the foster less at a time but more often. If the diarrhea is severe, lasts more than 3-4 feedings or contains blood/ parasites, call the Foster Coordinator to schedule a recheck.

Parasite

Fosters are dewormed upon intake and at every recheck. Parasites are commonly found in the stool of puppies and kittens. Tapeworms may look like grains of rice. Roundworms look like spaghetti and can be seen in the litter box or in vomit. If you notice worms, call the Foster Coordinator to schedule a recheck.

Fosters are dewormed upon intake and at every recheck. Parasites are commonly found in the stool of puppies and kittens. Tapeworms may look like grains of rice. Roundworms look like spaghetti and can be seen in the litter box or in vomit. If you notice worms, call the Foster Coordinator to schedule a recheck.

Vomiting

Vomiting is not serious unless it happens continuously or accompanied with diarrhea. It can lead to dehydration. If vomiting occurs 2-3 times in a row, call the Foster Coordinator right away.

Eye Discharge

It is normal for animals to have little pieces of crust in their eyes after waking up. If you see continuous yellow or green discharge, swollen or closed eyes call the Foster Care Support Line to schedule an exam. You can use a warm, damp cloth to wipe the affected area, being careful not to touch the eyeball itself.

MAINTAINING FOSTER HEALTH

Ear Mites

Ear mites are parasites that live in the ear canal. You may notice a bald spot behind their ears due to continuous scratching. They may also violently shake their head. The ears may smell bad and you may see brown discharge that resembles coffee grounds. Ear mites are contagious to other animals and need to be treated. Call the Foster Care Support Line if you notice any these symptoms.

Fleas

Animals that have fleas will scratch themselves often. Topical and oral flea prevention are given to fosters over 4 weeks of age. Flea prevention for puppies under 4 weeks includes daily brushings with the flea comb and daily bedding changes. If you still notice signs of fleas, you can wash the puppy in a small amount of Dawn® dish soap followed by using a flea comb to remove any remaining fleas. Be sure to thoroughly dry him/her following a bath. Baths should not be given more than once every 1-2 weeks. If you still notice signs of fleas, call the Foster Care Support Line to schedule an exam.

Ringworm

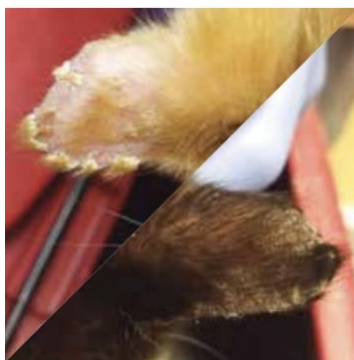
Ringworm is a contagious fungus that that can spread to other animals and humans. A sign of ringworm is thinning hair or patches of hair loss. Ringworm is difficult to remove from your house. To help with prevention and spreading maintain cleaning protocols and a good hand washing routine. Call the Foster Care Support Line if you notice any hair loss.

Mange

Mange is caused by parasites that infect the skin of animals. Some forms of mange are contagious to other animals and humans. The symptoms include itching, hair loss and sores. If you notice these symptoms, call the Foster Care Support Line for an exam.



Ear Mites



Ring Worm



Mange

MAINTAINING FOSTER HEALTH

Upper Respiratory Infection (URI) & Kennel Cough

URIs are common and are caused by contagious viruses and bacteria. Signs to look for:

- Sneezing and discharge from eyes/nose
- Coughing or gagging
- Congested breathing
- Loss of appetite
- Lethargy (lack of energy)
- Dehydration

If you notice any of these signs, please call the Foster Care Support Line to schedule an exam.

Parvovirus

Parvovirus is a deadly and contagious virus that attacks a dog's gastrointestinal tract. Once parvovirus is present in an environment it is difficult to remove. It is transmitted through direct contact with contaminated feces.

Signs to look for:

- Lethargy
- Dehydration
- Loss of appetite
- Abdominal pain and bloating
- Fever
- Low body temperature
- Vomiting
- Severe diarrhea with or without blood

If you notice any of these signs, immediately contact the Foster Care Support Line to schedule an exam.

MAINTAINING FOSTER HEALTH

Distemper

Distemper is a highly contagious and fatal disease that attacks the respiratory, gastrointestinal and nervous systems. It is transmitted through direct contact with contaminated saliva, blood, or urine.

Signs to look for:

- Severe Upper Respiratory Infection or Pneumonia
- Lethargy
- Neurological signs such as seizure activity, convulsions, and partial or complete paralysis.

VETERINARY CARE

NON-EMERGENCIES	EMERGENCIES
<p>Monitor First</p> <p>If worsens: Call the 24/7 Foster Care Support Line at (262) 993-9195</p>	<p>Requires Immediate Veterinary Attention</p> <p>Immediately call the 24/7 Foster Care Support Line (262) 993-9195</p>
<ul style="list-style-type: none"> • Runny discharge from the eyes or nose • Lack of appetite • Decreased energy • Diarrhea lasting more than 3 or 4 feedings • Vomiting • Decreased appetite • Coughing or sneezing • Lack of bowel movements for more than 24-36 hours or straining to urinate/defecate • Swollen eyes or eyes held closed 	<ul style="list-style-type: none"> • Neonate misses 2 or more meals, shows signs of distress or fatigue • Continuous diarrhea longer than 24-36 hours • Continuous vomiting longer than 12 hours • Loss of appetite • Bleeding of any kind (from nose or in urine/stool) • Any trauma (hit by a car, dropped, limping, unconscious, etc.) • Difficulty breathing or labored breathing • Lethargy with or without fever • Not responsive

VETERINARY CARE

Emergency Care

The HAWS Foster Care Staff on the 24/7 Foster Care Support Line take calls around the clock for when emergencies arise. As necessary, the Foster Care Staff will contact the HAWS veterinarians so they can advise as to how to manage each particular case. Should after-hours treatment be needed, the HAWS Foster Care Staff will instruct the foster volunteer on the appropriate steps to take. All vet care must be pre-authorized by HAWS staff.

HAWS will not reimburse individuals for vet bills for foster animals when taken for veterinary care outside of that which is pre-authorized by HAWS staff.

Scheduling Routine Vaccines & Treatments

Foster animals are required to return to the shelter periodically for vaccinations, deworming and general exams. When you take your foster animals home, you will be provided with a sheet of paper or an e-mail that lets you know when you should be scheduling treatments for your foster animals. Call the Foster Care Support Line to schedule a time to come to HAWS for treatments so that staff can prepare for your visit.

TIPS & TAILS

When is your foster due for vaccines and treatments? Check the sheet or e-mail that was provided when you took your foster/s home or call the Foster Care Support Line 262-993-9195.

THE FINISH LINE

Spay/Neuter Surgery

HAWS used the following guidelines to determine when the foster animal is ready to be returned for surgery:

- Are the puppies or kittens at least 8 weeks of age and are they proper weight for surgery?
 - Kittens must weight at least 794 grams. Puppy weights vary by breed.
- Are they successfully weaned from their mother?
- Have they been successfully socialized?
- Is your foster healthy and recovered fully from the illness or injury?
- Is there room on the adoption floor?

In most cases, the foster care coordinator will be in touch with you as your pets are hitting these milestones in order to schedule surgery and adoptions. If you believe your foster animals meet the above criteria and haven't heard anything, feel free to email Jessica at jessica@hawspets.org to schedule a time to return your foster animals.

The Day of Surgery

- We ask that kittens are puppies are dropped off at our SNIP clinic the morning of surgery.
- If your foster animals are still in your care the day before surgery, do not offer food after 9pm the night before surgery. (Do NOT fast small mammals such as rabbits and guinea pigs.)
- All pets should receive fresh water at all times, even the morning of surgery.
- If you've been instructed to take your foster animal/s back home after surgery, SNIP staff will provide you with a pick-up time. In most cases, animals are released the same day the surgery is performed. Post-surgical instructions and sometimes pain medication, will be provided at time of pick-up.

READY FOR ADOPTION!

CONGRATULATIONS! YOU HAVE SAVED A LIFE!

How do foster pets get adopted?

In most cases, pets return to HAWS once they meet the adoption criteria mentioned on page 33, and they make their big adoption debut! Occasionally, a pet will remain in foster care while available for adoption. This isn't ideal because the pet has very limited exposure while in foster care. While these pets are promoted on our website, on social media, and on posters at HAWS, it can still take more time for them to get adopted if they're not at HAWS for viewing hours. It's sometimes necessary for an adoptable pet to remain in foster care however, if they don't thrive at the shelter environment and find the environment too stressful.

How can Foster Care Volunteers help their pet get adopted?

For adult animals we will request that you complete our personality profile. The personality profile provides information for HAWS staff and for the potential adopter, that can help ensure a successful, lasting adoption placement. Information such as where your foster pet likes to sleep, how does he signal the need to go outside for elimination, what are his favorite toys, and many other questions that adopters are curious about.

Providing HAWS staff with high quality photos of your foster pets in a home environment, interacting with family and possibly other pets, is also helpful!

Can foster parents adopt their foster animal?

You bet! Foster volunteers have first choice to adopt their foster pet. Adoption fees apply, but a discount is provided.

TIPS & TAILS

Photo Taking Tips

Capture your foster pet being himself

Get on their level

Use the right lighting and setting

Be patient

Have fun and be creative!

READY FOR ADOPTION!

Steps to take when you or a friend want to adopt a foster

Foster volunteers, if your foster animals weren't already named when you took them home, please inform staff of the names once you choose them. We will enter these names in each pet's file. Later, this will speed up the adoption process and avoid any confusion for the HAWS Adoption Counselors when you or a friend is trying to set up an adoption for your foster animal.

The adoption application process:

- An adoption application must be filled out ASAP and 4 days prior to the foster animal returning to HAWS for surgery. This allows the staff to get the adoption schedule and take a deposit for the adoption.
 - The adoption application can be found on the HAWS website, www.hawspets.org, or can be completed at HAWS.
 - On the application, please indicate that you are the foster volunteer for the animal, or if a friend is adopting, your friend should provide your name in the notes field of the application and indicate that the animal is in your care.
 - If the adopter is a renter, it's required that they first get the approval of the property owner.
 - Dogs or cats currently in the home must be up-to-date on their vaccinations.
 - If adopting a dog or puppy an introduction between the resident dog and the new dog must first be scheduled with HAWS.
- Once an application has been submitted, the adopter should follow up with a call to our adoption office to make sure the application was received. If the adopter has not received final confirmation of the adoption within 24-48 hours, the adopter should follow up with a second phone call.
- Puppy adoptions are often handled by one particular staff member, to ensure all of the extra considerations of adopting a puppy are handled appropriately. Expect to be put in contact with that person and please allow 24-48 hours for them get back to you.

HAWS Adoption Staff (262)-542-8851, Ext 0

IMPORTANT LINKS!

https://www.aspcapro.org/sites/default/files/aspca_webinar_earlyage_foster.pdf

<http://www.kittenlady.org/videos>

<https://www.thesprucepets.com/how-to-burrito-a-cat-5069576>

<http://www.urbancatleague.org/TamingFerals>

THE END

THANK YOU!